

# NJ Audubon's Scherman Hoffman Wildlife Sanctuary

Located just minutes off Route 287 south of Morristown on 276 acres with miles of trails meandering through upland forest, fields, woodland and the floodplain along the headwaters of the Passaic River.

## Directions:

From Route 287: Exit 30B. From the exit ramp, bear right and go to the light by the Old Mill Inn (Route 202). Proceed straight ahead through the light onto Childs Road. Go 0.2 miles and bear right onto Hardscrabble Road. Follow this road for about 1 mile until you see our sign on the right. Turn right into the driveway, and follow it up the hill to the Hoffman Building.

From Route 24 in Mendham: Take Tempe Wick Road 1.9 miles to Ledell Road and turn right (there is no sign for Ledell Road -- it is by a waterfall). Follow Ledell Road 1.7 miles to Hardscrabble Road and turn left. After approximately 1 mile you will see the Scherman parking lot entrance on the left. The main driveway to the Hoffman Sanctuary building is past the Scherman parking lot on the left, up the hill.

NJ Audubon is a privately supported, not-for-profit, statewide membership organization. Founded in 1897, and one of the oldest independent Audubon Societies, NJA has no formal connection with the National Audubon Society.

*Making New Jersey a better place  
for people and wildlife since 1897.*



NJ Audubon is proud to be National Wildlife Federation's New Jersey affiliate.



## SCHERMAN HOFFMAN WILDLIFE SANCTUARY



NEW JERSEY  
AUDUBON  
www.njaudubon.org

## SUMMER NATURE CAMPS

*Helping Connect your Child to Nature*



State of New Jersey  
Summer Camp Certification #2191

11 Hardscrabble Road  
Bernardsville, NJ 07924  
Phone 908-766-5787

Fax 908-766-7775

[www.njaudubon.org/centers/scherman](http://www.njaudubon.org/centers/scherman)



## SUMMER CAMP DETAILS

A Message from Mike Anderson, Sanctuary Director

We look forward to sharing the wonders of nature with your child/children this summer. NJ Audubon has a long history of connecting children of all ages to nature by exploring, discovering, and enjoying our forests, fields, streams, and ponds. Our staff is committed to guiding your child in outdoor adventures that foster a deeper connection with the natural world and that are engaging, fun, and informative. Our summer education team is highly trained and we provide additional educator / interns to maintain optimal teacher-child ratios.

### Ways to Register

- Download a registration form from [www.njaudubon.org/centers/scherman](http://www.njaudubon.org/centers/scherman)
- Call, FAX, email, or register in person at the center.
- Call the center at 908-766-5787 and we will send you a registration form via email.
- If you have any questions: please call 908-766-5787 or email us at [shws@njaudubon.org](mailto:shws@njaudubon.org)

### Camp Times and Fees

**Day Camp:** 9:00 to 3:30; Earlybird registration \$265 per week until April 14th; \$280 per week after April 14th. Post-care: 3:30pm-5:00pm, \$60 week. Full week enrollment only.

**Preschool Camp:** 9:00 to noon; \$95 (earlybird)/\$100 for 4-day week.

**Overnight Camp:** \$650/week.

Membership in NJ Audubon: NJ Audubon membership is required to sign up for summer nature camps. Members strengthen the voice with which NJA speaks out for protection of NJ's wildlife and natural areas, and they provide inspiration and essential financial support for our sanctuaries and programs in conservation, education and research.

## PRESCHOOL CAMP

### AGE 4 TO ENTERING KINDERGARTEN

9:00 to noon

#### OUR GREEN PLANET

July 2, 3, 5, 6 (4-day week—no camp July 4)

We'll learn about our green planet as we explore the fields, forest and wetlands of the Sanctuary. There will be time for stories, games, nature treasure hunts, crafts, and songs to make learning about animals and plants great fun for your child.

## DAY CAMPS

### ENTERING GRADES 1 THROUGH 3

9:00A.M. to 3:30P.M.

#### HABITAT ADVENTURES

June 25 to 29

We will explore the field, pond, stream and forest habitats of the sanctuary and learn who lives in each. Children will learn about nature through their own outdoor discoveries.

#### WET & WILD

July 9 to 13

Prepare to get wet as we explore the watery habitats of the sanctuary. We'll learn all about frogs, dragonfly nymphs, crayfish, and other creatures that live in the river and ponds.

#### SCUTES, SCALES, & TAILS

July 16 to 20

We will explore the fields, forest, and ponds to search for the snakes, turtles, salamanders, toads, frogs, and tadpoles that call the Sanctuary home.



#### ANIMAL KINGDOM

July 23 to 27

Birds, butterflies, turtles, and chipmunks...what do they all have in common? They are all in the animal kingdom. Each day we will investigate a different animal group found at the sanctuary.

#### WATER, WATER, EVERYWHERE

July 30 to August 3

We'll explore and learn about a wetland habitat every day, and learn about some of the unique properties of water.

#### GOING BUGGY

August 6 to 10

Get up close and personal with the beautiful butterflies and other insects of the sanctuary. We'll learn what makes an insect an insect and their amazing life cycles.



#### NATURAL ART

August 13 TO 17

Art comes alive in nature. Campers will bring out their inner artist as they create crafts and drawings inspired by the plants and animals we discover together at the sanctuary.

#### NATURE FROM THE GROUND UP

August 20 to 24

When we explore nature, we usually spend our time looking at flowers and birds. This week campers will explore what's beneath their feet, too. We'll see how important the soil is to the plants and animals we find during our daily explorations.

#### WHO LIVES HERE?

August 27 to 31

Campers will spend lots of time looking under logs, using nets in the field, and searching the river for the animals and plants that live in each of the habitats of the Sanctuary.

### ENTERING GRADES 4 THROUGH 6

9:00A.M. to 3:30P.M.

#### JUNIOR NATURALIST

June 25 to 29

Campers will explore and discover what is in the sanctuary with more emphasis on classification and identification. Morning hikes will be in the forest, fields, and at the ponds. Afternoon adventures will take place along the Passaic River. Campers will create journals as part of the NJ Audubon Habitat Passport Program.

#### WILD WETLANDS

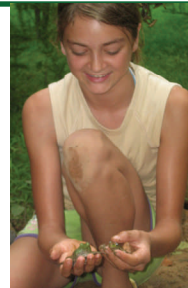
July 9 to 13

Our daily adventures at the river, pond, and other waterholes will focus on the wildlife that lives there. We will discover how these plants and animals survive in their watery world, and why water is so important to them.

#### HERPTILES

July 16 to 20

Snakes, turtles, frogs and more... We will explore the forest, field, and ponds to find reptiles and amphibians, and learn about the amazing adaptations of these herptiles.



#### FABULOUS FLYERS

July 23 to 27

Learn to appreciate all the animals that can fly - not just birds, but insects and bats also. Explore the properties of flight, gliding, and the wonders of migration. Even some seeds have "wings".

#### WATERSHED ADDRESS

July 30 to August 3

Campers will explore the world of water, from wetland exploration to cool water experiments. We will learn what a watershed address is and how important watershed stewardship is to all of us.

#### INCREDIBLE INSECTS

August 6 to 10

Discover and investigate in all habitats of the sanctuary the largest group of animals on the earth, the insects. Learn about their importance, life cycles, and amazing behaviors.

#### ART & NATURE

August 13 to 17

Campers will create a nature journal to sketch and record their observations during our daily adventures outside. Environmental artwork will be created during the week as students appreciate the beauty around them.



#### EARTH CONNECTION

August 20 to 24

Encourage your camper's sense of stewardship with this week's activities. Campers will learn that not only is it important to care for the Earth, but it can be fun, too! We will explore the Sanctuary's habitats to see who is living there, and learn how we can help conserve the land and its resources.

#### BUDDING BIOLOGISTS

August 27 to 31

Daily hikes will explore the many habitats of the sanctuary, and activities will include searching for river critters and learning to identify sanctuary birds, frogs and insects. Wildlife and plant connections will be emphasized.

## OVERNIGHT ADVENTURE CAMPS

### ENTERING GRADES 6 THROUGH 8

#### ISLAND EXPLORERS

Session I July 9 to 13

Session II July 23 to 27

Session III August 7 to 11

Sedge Island is located in Barnegat Bay off the tip of Island Beach State Park. Activities will include dune, marine, and salt marsh ecology, kayaking, crabbing, clamming, fishing, and birding. Meals, lodging, and memories to last a lifetime.

#### RIDGE EXPLORERS

Session I June 24 to 29

Session II July 15 to 20

We'll stay in cabins at the Appalachian Mountain Club's Mohican Outdoor Center. We will visit the Delaware Water Gap NWR, Crater Lake, VanCampen Glen, Tillman Ravine, Spray Falls, and Buttermilk Falls. Activities will include: fossil hunts; stream and waterfall exploration; canoeing, kayaking, and swimming at Catfish Pond; and special programs by NJ Fish and Wildlife and the NJ Forest Service. Meals, lodging, transportation, and memories to last a lifetime.

